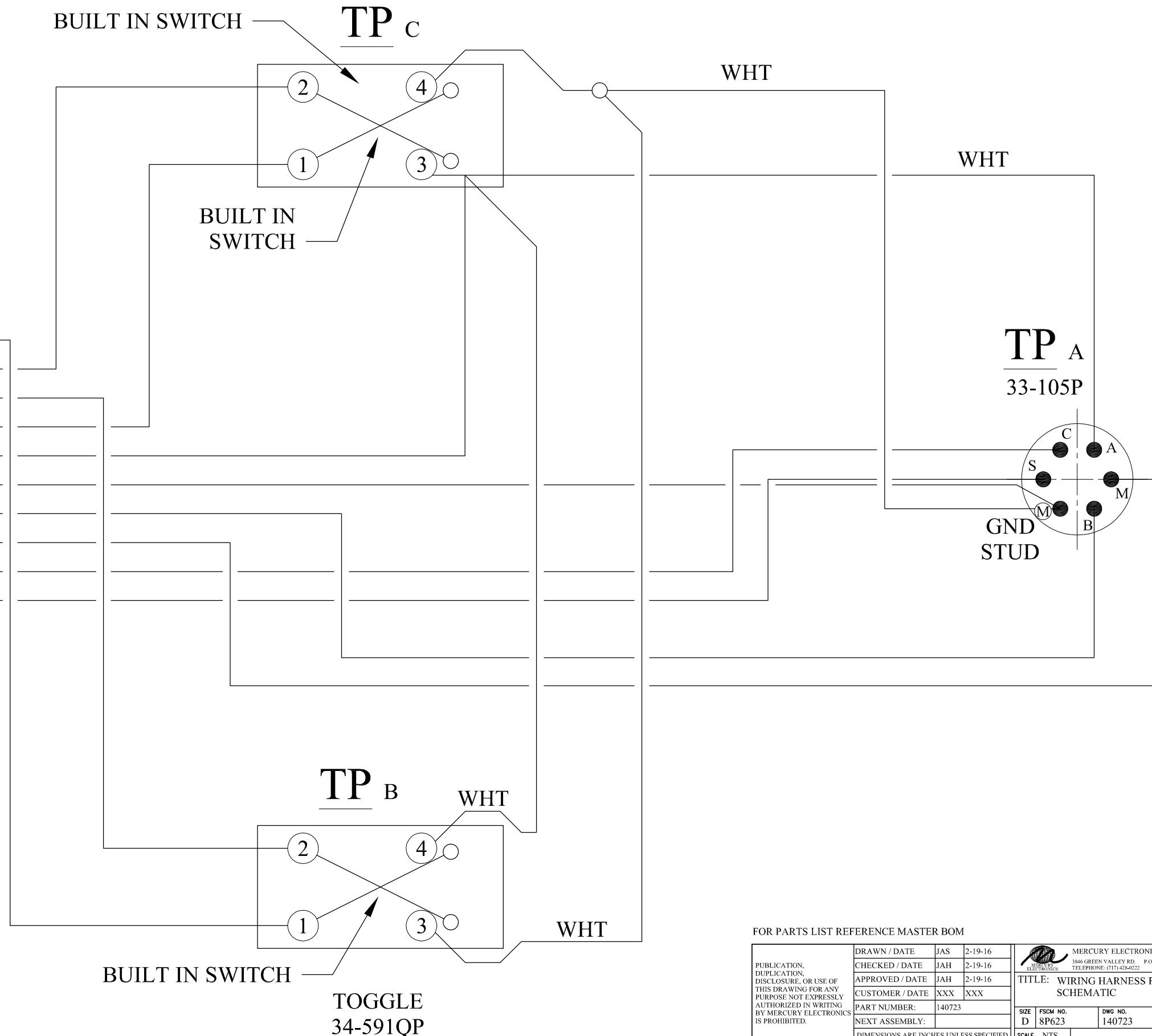


REVISIONS			
REV	DESCRIPTION	DATE	APPROVED
A	ADDED PAGE 2 FOR SCHEMATIC	2-19-16	JAH


POLLAK  
TOGGLE 34-591QP = MOM/ON - OFF - MOM/ON

NOTE:  
1. ALL 18 AWG

TP <sub>D</sub> DT04-12PA	
1	RED/BLK
2	BLK
3	BLUE/BLK
4	ORG/BLK
5	YEL/BLK
6	BRN
7	YEL
8	ORG
9	BLUE
10	RED



FOR PARTS LIST REFERENCE MASTER BOM

PUBLICATION, DUPLICATION, OR USE OF THIS DRAWING FOR ANY PURPOSE NOT EXPRESSLY AUTHORIZED IN WRITING BY MERCURY ELECTRONICS IS PROHIBITED.	DRAWN / DATE	JAS 2-19-16	 MERCURY ELECTRONICS DIVISION of DTP Inc. 3866 GREEN VALLEY RD. P.O. BOX 248 SEVEN VALLEYS, PA 17860 TELEPHONE: (717) 426-0222 FAX: (717) 426-0333
	CHECKED / DATE	JAH 2-19-16	
	APPROVED / DATE	JAH 2-19-16	
	CUSTOMER / DATE	XXX XXX	
	PART NUMBER:	140723	
	NEXT ASSEMBLY:		
DIMENSIONS ARE INCHES UNLESS SPECIFIED		SCALE NTS	SHEET 02 OF 02

SIZE	FSCM NO.	DWG NO.	REV
D	8P623	140723	A